

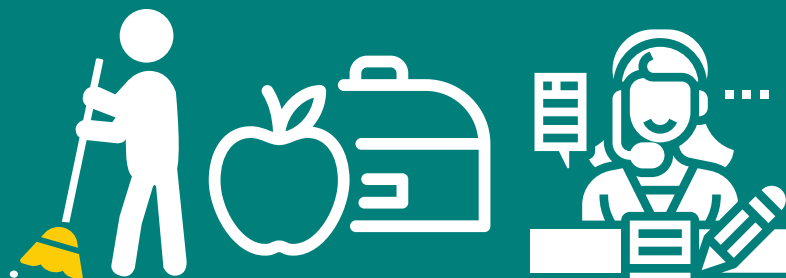
EDUCATION SUPPORT PROFESSIONALS THANK YOU TOOL KIT

The Maine Education Association created this tool kit for local associations to use as they work to show their support staff they are appreciated and respected.

Use the graphics, posts and cards on your social media pages (if you have them), post them on your union bulletin boards, send them in emails and/or share them with your teacher members to post on their own social media accounts. Get as creative as you want! Also included in the tool kit is a coloring book you can print and give to your students to help them better understand the importance of ESP in our schools.

MEA knows our schools couldn't run without our ESP, and it wants to help elevate their work inside each district and in the public as well.

THANK AN ESP TODAY!



maineea.org



CERTIFICATE OF APPRECIATION

THIS IS PRESENTED TO

LOCAL UNION
PRESIDENT

LOCAL UNION VICE
PRESIDENT

For all your outstanding work as an Education Support Professional. We truly respect and appreciate all you do for our students.

CERTIFICATE

OF APPRECIATION FROM YOUR UNION

PROUDLY AWARDED TO:



ESP OF THE
MONTH



For your outstanding support of our
students and school community

LOCAL UNION PRESIDENT

LOCAL UNION VICE PRESIDENT



Dear Education Support Professionals,

We all truly respect you for the work you
do for our students.

You keep our schools running.

You bring students to school safely.

You give students the extra support they
need to learn and grow.

You feed our students healthy meals.

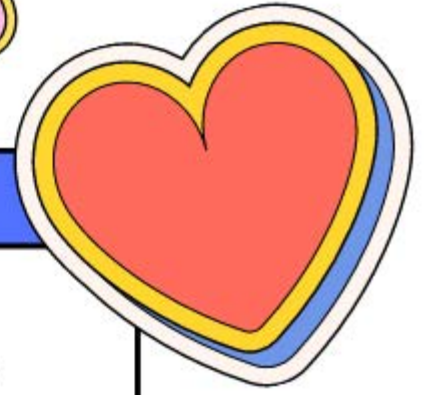
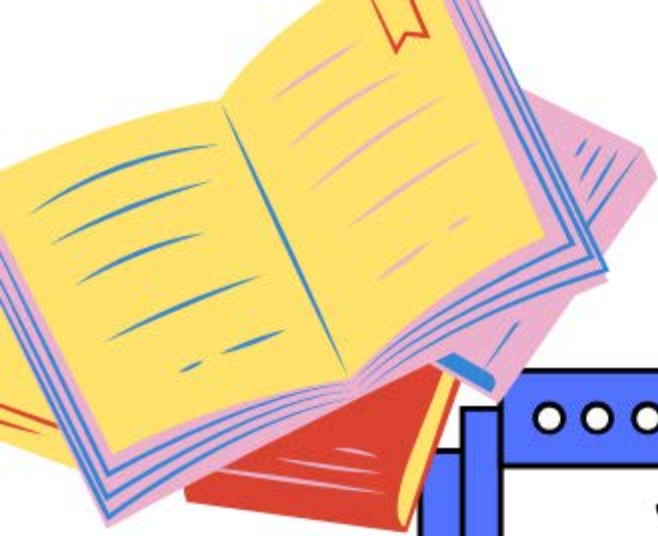
You keep our schools clean and safe.

Without all of you, our schools wouldn't
run-we need and appreciate all our ESP!

Thank you! Everyone!

-Your Local Union Leadership Team





Thank You
TO ALL OUR ESP

←-----→
our school wouldn't
be the same
without you!



ESPs

Supporting Students and Schools in Every Way Possible

Our Education Support Professionals work hard each day to keep students and schools safe and clean. They work in our halls, on school grounds, in classrooms, on the bus, in the cafeteria, in the library and in the main office all while keeping an eye on students. ESPs are usually the first to arrive at school and the last to leave. They are dedicated and are a key part of the school community. The following data is based on responses of a survey the MEA sent to ESP members.



99%

Believe that their job responsibility involves promoting school safety.



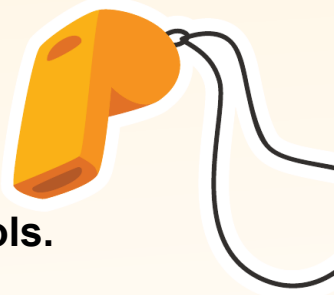
86%

Have witnessed bullying behavior in Maine's schools.



94%

Have intervened or tried to stop bullying in schools.



73%

Live within the community/communities of the school district where they work.

75%

Spend their own money to buy supplies or food for students in their district.



40%

Volunteer to help students in their district.



60%

Belong to a community or school group.

94%

Have participated in classes, training and certification to further their knowledge of their field, such as CPR, Associate's/Bachelor's degrees, ELL, Anti-Bullying, and Nutrition.



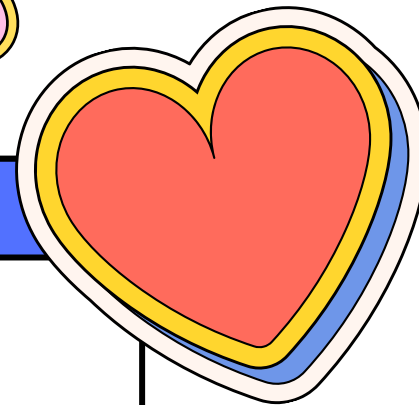
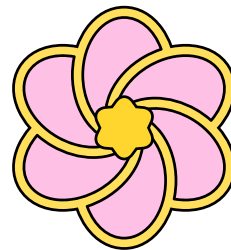
TO OUR DEDICATED ESP,

THANKS FOR ALL YOU DO!

We appreciate your efforts in making learning possible, and respect all the work you do to keep our schools running smoothly!



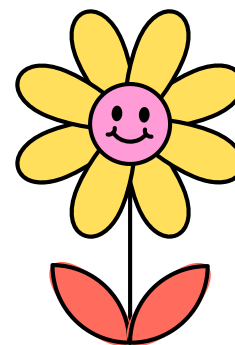
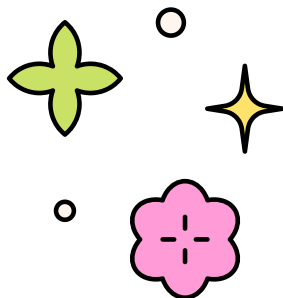
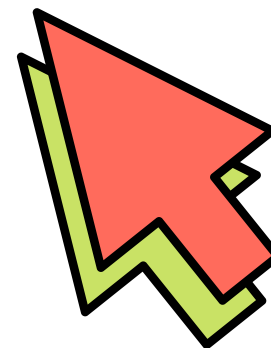
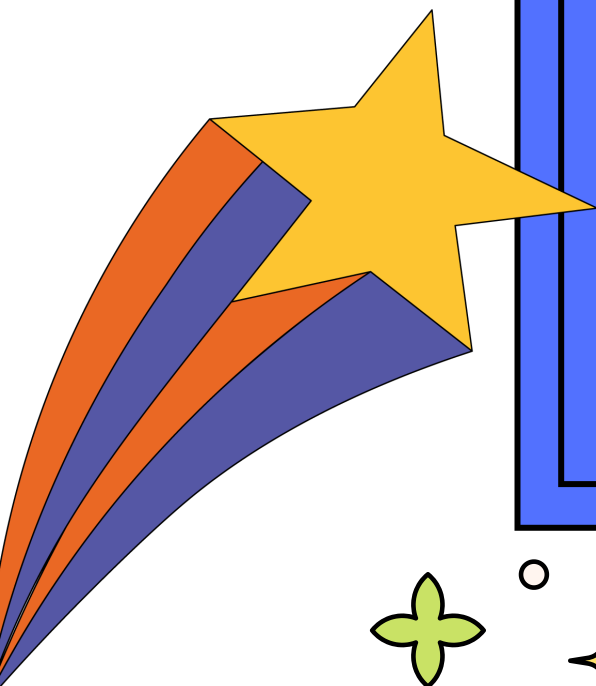
-YOUR LOCAL ASSOCIATION
LEADERSHIP TEAM



Thank You
TO ALL OUR ESP

←-----→

Our school wouldn't
be the same
without you!





Dear Education Support Professionals,

We all truly respect you for the work you do for our students.

You keep our schools running.

You bring students to school safely.

You give students the extra support they need to learn and grow.

You feed our students healthy meals.

You keep our schools clean and safe.

Without all of you, our schools wouldn't ❤️ run-we need and appreciate all our ESP!

Thank you! Everyone!

-Your Local Union Leadership Team



Let's Learn About Education Support Professionals



Coloring Book

EDUCATION SUPPORT
ESP
PROFESSIONALS
One Education Workforce
Serving the Whole Student

Maine Education Association

The Maine Education Association is a diverse group of professional educators, standing together to ensure that our voices, values, and priorities are heard and respected and that every Maine student has the opportunity for an outstanding education. MEA advocates for better pay, benefits, and working conditions for members. We stand up for, support, and empower members in and out of the classroom. And MEA works to ensure equity, prevent discrimination and prejudice, and advance great public schools for all educators and students across the state.

MEA Officers

Grace Leavitt, President

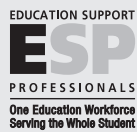
Jesse Hargrove, Vice President

Beth French, Treasurer

Rebecca Cole, NEA Director

MEA Executive Director

Rachelle Johnson



Maine Education Association

35 Community Drive
Augusta, Maine 04330

202-622-5866

www.maineea.org

This book belongs to:

My school name is:

My favorite class is:

My favorite color is:

My favorite book is:

In your school,



**there are special people who
keep you safe, healthy, and
engaged so you are ready to
learn!**

**They are called Education
Support Professionals (ESPs).**

I make you healthy and tasty meals.



My food server's name is _____

Food service professionals ensure student success by providing students safe, nutritious, and tasty meals. Food service professionals provide a basic component of student success — nutrition — which influences students' behavior, energy levels, thinking, physical health, and overall well-being. Food service professionals know that students who are undernourished are less able to learn. Jobs include but are not limited to, cooks and food preparation workers, dietitians and dietary technicians, cashiers and other cafeteria service workers.

I drive you to and from school safely every day.



My bus driver's name is _____

Transportation service professionals ensure student success by safely driving students to and from school. They operate and maintain a school system's vehicles. School bus drivers are the first people to greet students on their way to school and the last to bid them goodbye as they return home. They are often the first to recognize when a child is troubled or ill. Jobs include but are not limited to, bus, truck and van drivers, vehicle mechanics, garage and other maintenance workers.

I keep your school clean and safe.



My custodian's name is _____

Custodial and maintenance professionals ensure student success by keeping schools clean and safe for students, staff, parents, and the community. In addition to heavy cleaning and grounds keeping duties that are most often associated with their jobs, custodians and maintenance professionals perform a dizzying array of other tasks, such as clearing snow, cleaning up spills, painting, and maintaining boilers. Jobs include but are not limited to, building and grounds maintenance staff, custodians, housekeepers, mechanics (except vehicle) and repairers, laborers, helpers, and warehouse personnel.

I educate you in class.



My paraeducator's name is _____

Paraeducators ensure student success by providing direct services to students and their parents and by assisting with classroom instruction. A large number of paraeducators work with students with special needs. Jobs include but are not limited to, instructional and non-instructional assistants, library aides, teacher's aide, technicians, assistants, preschool caregivers, building, bus and playground monitors and crossing guards.

I protect you.



My security officer's name is _____

Security service professionals ensure student success by protecting the school community and promoting a safe school environment for all. Security service jobs have become more challenging, and their responsibilities have dramatically increased. An important role they have on a daily basis is to counsel or just befriend students with whom they interact. Jobs include but are not limited to, guards, security workers and school resource officers.

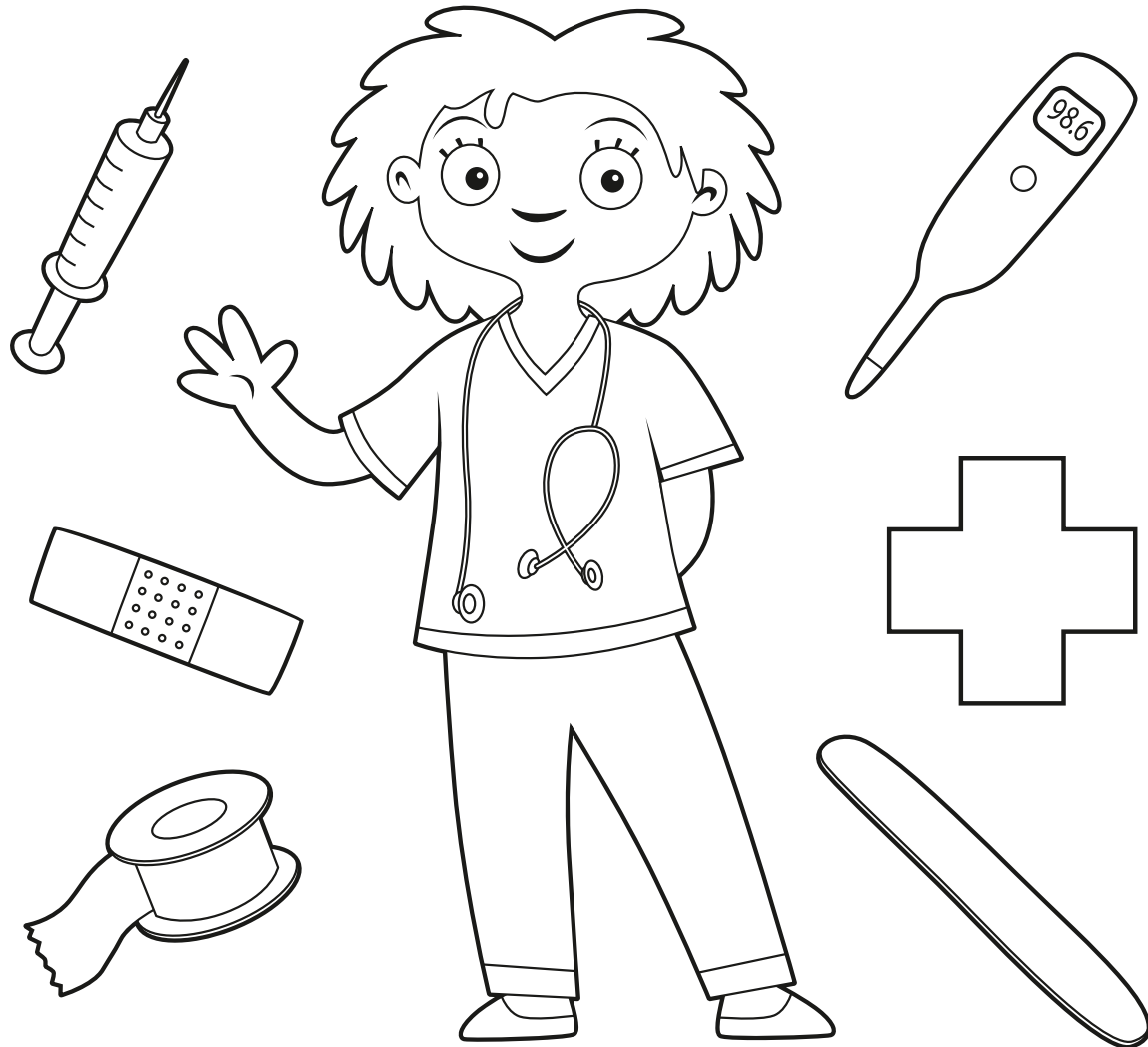
I manage the office in your school.



My secretary's name is _____

Clerical service professionals ensure student success by providing courteous and helpful assistance to school and office visitors. They are on the front lines of all office operations, working in settings from schools to administrative offices to transportation facilities. They interact daily with students, parents, and staff, and make a first and lasting impression about a school and its district. Jobs include but are not limited to, administrative and office assistants; data entry, payroll, and general office workers; bookkeepers and accounting and financial assistants; registration, records, and attendance technicians.

I take care of your health.



My health officer's name is _____

Health and student service professionals ensure student success by performing a wide variety of jobs that improve and protect student health and welfare. In addition to the traditional tasks of providing first aid, monitoring immunizations, conducting health screenings, and assisting sick and injured children, they provide education that encourages students to maintain good health independently. Jobs include but are not limited to, licensed practical nurses; nurses' and health aides; health technicians; family and parent services aides; community welfare services workers.

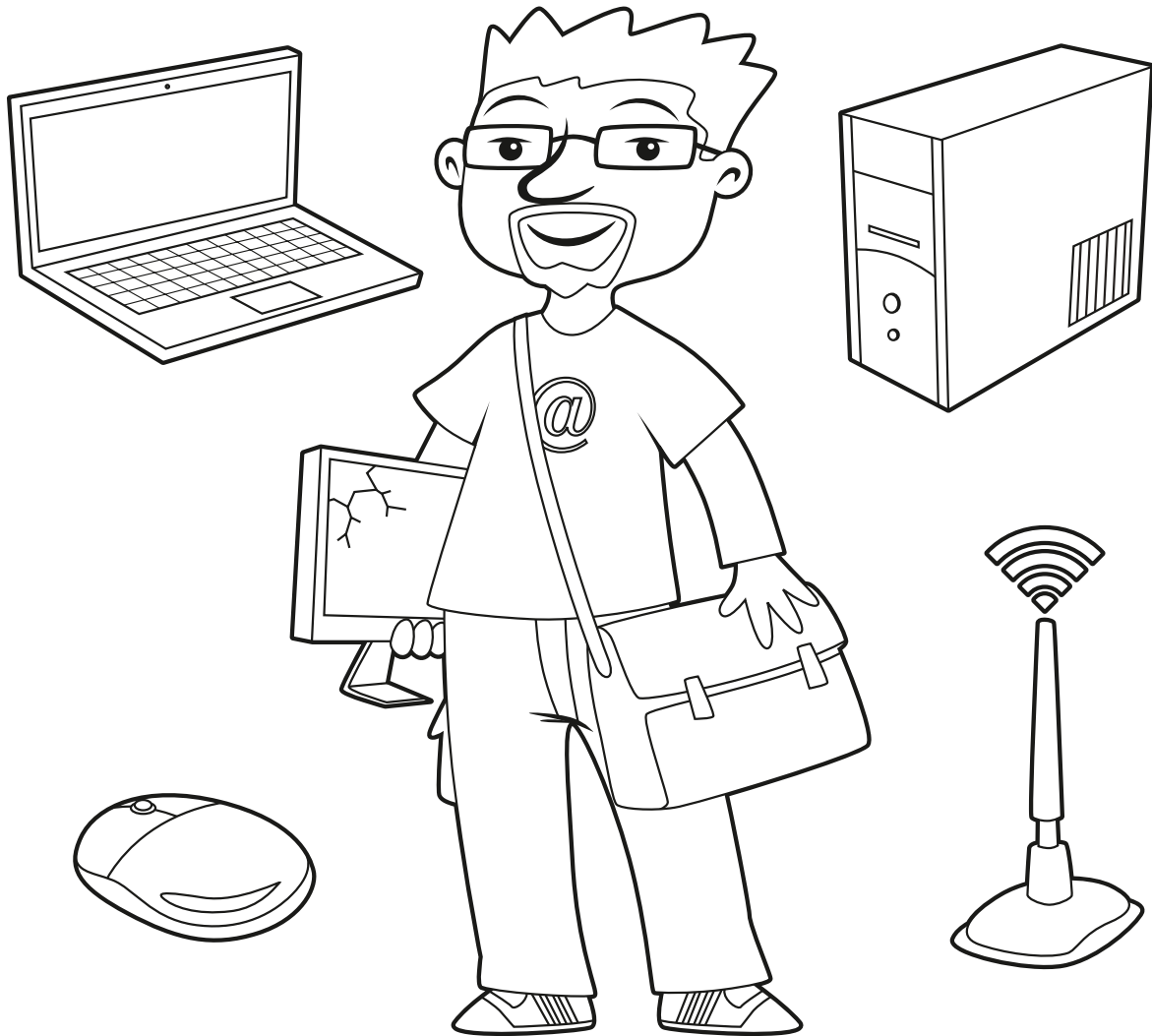
I fix things at your school.



My trade professional's name is _____

Skilled trade professionals ensure student success by maintaining and improving the physical quality of school buildings, offices, and facilities. They do a wide variety of jobs that require specialized expertise — and often licenses or certifications — in specific vocations. They work behind the scenes to repair, maintain, and operate machinery that is essential to the smooth functioning of the school. Jobs include but are not limited to, carpenters, electricians, painters and glaziers; heating, ventilation, and air conditioning mechanics and specialists; machine operators, assemblers, and inspectors; and printing services personnel.

I operate your school's computers.



My technician's name is _____

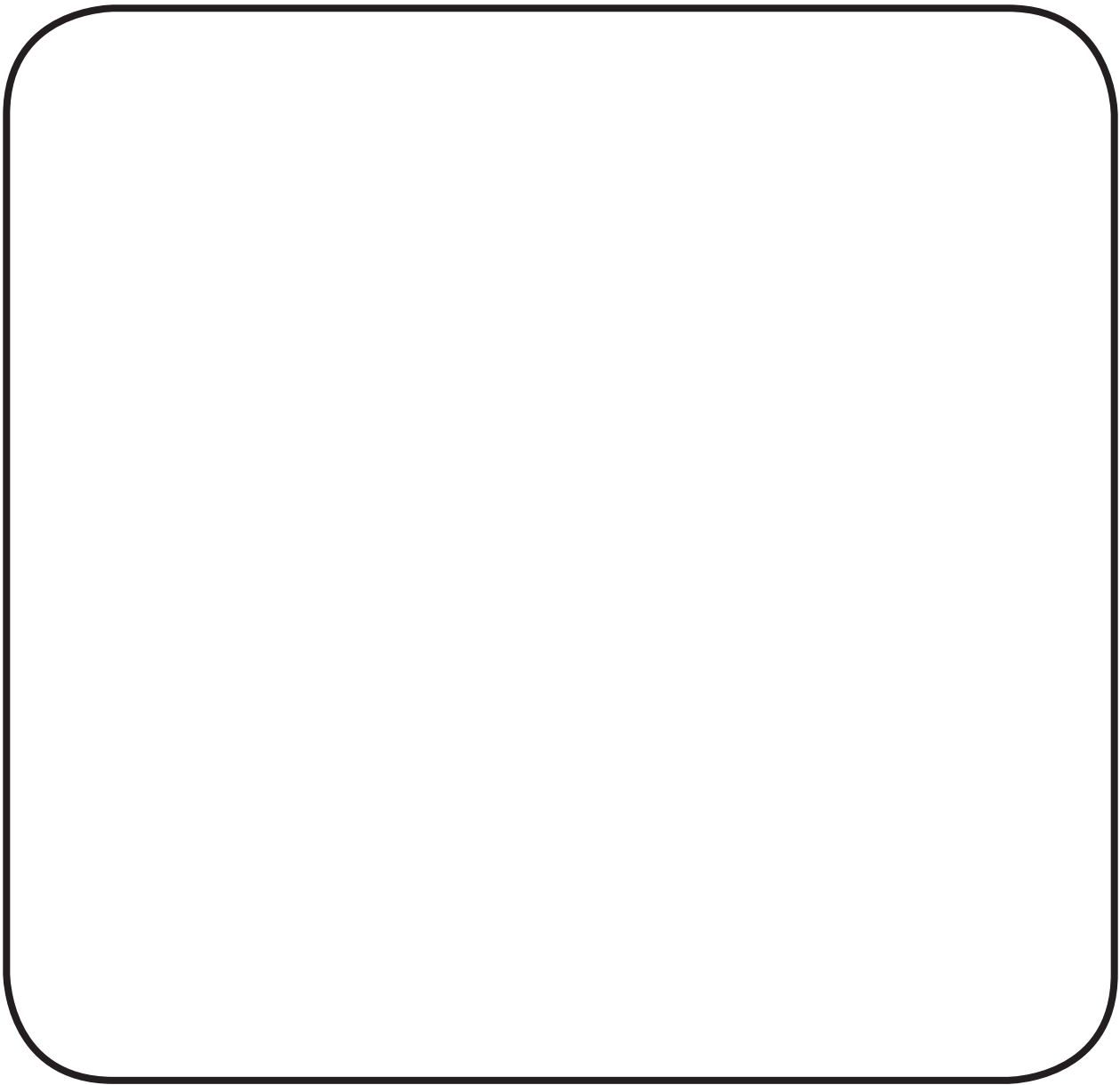
Technical service professionals ensure student success by being at the center of all efforts to maintain high standards of technology and communications. They install, repair and upgrade computers and networks that enable the timely communication of essential information between parents, school district employees, and students. They mentor students, teachers, and staff in the use of the latest computing and telecommunications technologies. Jobs include but are not limited to, audiovisual, language, science, mechanical, and electrical technicians; programmers, systems analysts, and data processing specialists; media and public relations specialists; designers, photographers, and graphic artists.

Education Support Professionals



**Ensuring
Student and
School Success**

Draw a picture of your favorite Education Support Professional here.



My favorite education support professional is:

Choose the Work Tool

Circle the correct tool for each ESP.



A chef in an apron holding a tray of food. To the right are a school bus, a whole pie, a plate with a fork, and a carton of milk.

Food



A nurse in scrubs with a stethoscope. To the right are a bucket with a mop, a pen, and a bandage.

Health



A paraeducator in a dress holding a book and a bag. To the right are a wireless antenna, a stack of books, and a thermometer.

Paraeducator



A tradesperson in overalls and a cap holding a wrench. To the right are a corded phone, a screwdriver, and a stack of books.

Trades

Follow the Numbers

Draw a line from 1 to 10 to help the student get to the bus.



1

2

3

4

7

5

8

6

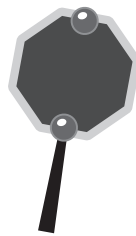
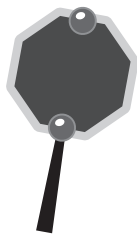
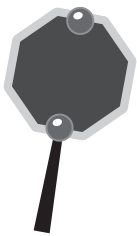
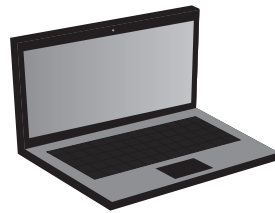
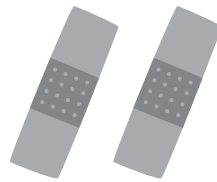
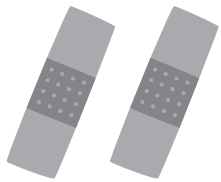
9

10



Complete the Pattern

What comes next?



Trace the Letters

Education Support

Professionals

Ensuring Student

and School Success



Certificate of Completion

IS CONGRATULATED ON COMPLETING
Let's Learn About Education Support Professionals

COMPLETED ON _____

